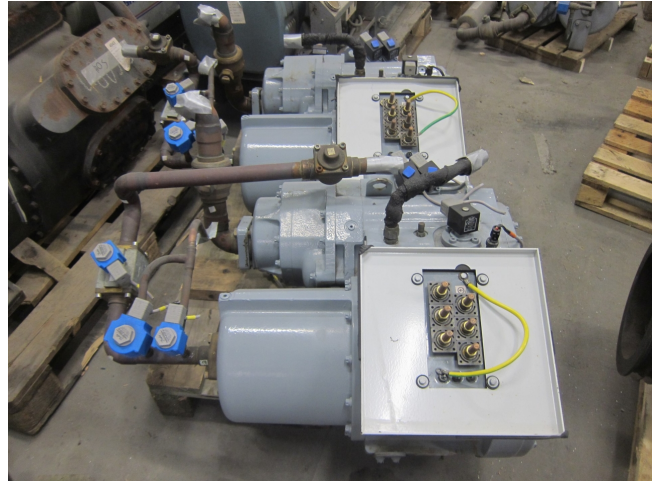


Carlyle / Carrier 06NA2300S5EA

Specifications

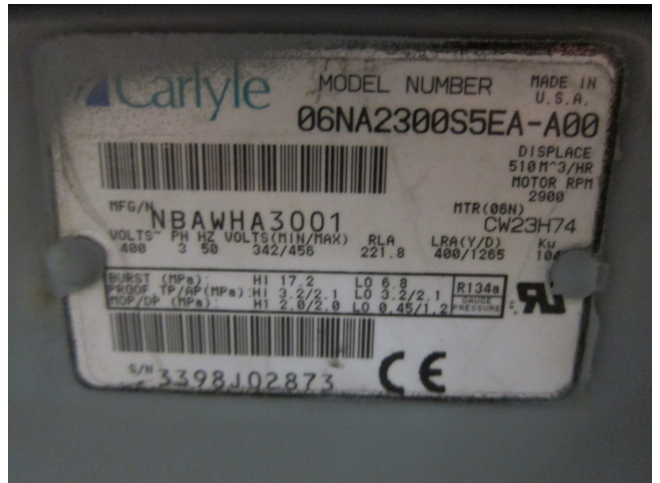
Brand	Carlyle / Carrier
Type	06NA2300S5EA
Refrigerant	Freon
Refrigerant type	R 134 A or other types
kW at -10°C/+40°C	288,6*
Remarks	*Capacity is approx
Sizes	1050x800x550 mm (LxWxH)



Description

Used Carlyle / Carrier 06NA2300S5EA

Used, well maintained Carlyle / Carrier 06NA2300S5EA semi-hermetic screw compressors. *Why choose for HOSBV? We are not only the largest used refrigeration specialist in Europe, but also, we deliver all equipment including an extensive test, warranty and industrial cleaning.





Compressors

Reference	Size	I nom.	MHA	LRA	LRA (Y)	LRA (S) 1 cp.	LRA (S) 2 cp.
06NA2146S7N	39	70	95	605	191	220	-
06NA2174S7N	46	90	120	715	226	260	-
06NA2209S7N	56	113	145	856	270	330	420
06NA2250S7N	66	130	175	960	303	380	500
06NA2300SSN	80	156	210	1226	387	445	550
06NA2300SSE	80+	174	240	1265	400	460	600

Legend:

- 06NA - Compressor for air-cooled units
- N - Non-economized compressor
- E - Economized compressor
- INCM - Average current draw of the compressor at Eurovent conditions
- MHA - Must hold ampere (maximum operating current) at 360 V
- LRA - Locked rotor current with across-the-line start
- LRA (Y) - Locked rotor current at reduced current (start/stop start-up mode)
- LRA (S) 1 cp. - Start-up with reduced current with electronic starter (start-up duration 3 seconds max.) for one compressor per circuit
- LRA (S) 2 cp. - Start-up with reduced current with electronic starter (start-up duration 3 seconds max.) for two compressors per circuit